

# Copenhagen Markets

LOGICOR.EU

Litauen Alle 13, 2040, 2630 Taastrup, Denmark

///riders.quest.paradox

Northern Europe's largest  
wholesale market

Units 200 - 6,500 m<sup>2</sup> approx

Available now



# Copenhagen Markets

Discover Northern Europe's leading marketplace and distribution center, catering to a wide range of industries beyond flowers, fruits and vegetables. With convenient access via gates and ramps, the facilities offer customizable spaces, including cold rooms, decks, and offices.

The amenities extend to convenient parking for goods and passenger cars. The entrances benefit from a sophisticated barrier system that ensures restricted access. To further bolster safety measures, the facility is fenced and overseen by security personnel.

# World Union of Wholesale Markets (WUWM)

220

220 members over 42 countries and 5 continents

110,000

Over 110,000 employees

300 Billion

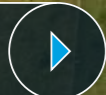
Annual turnover of over DKK 300 billion

40%



40% of the total turnover of fruit and vegetables in Europe

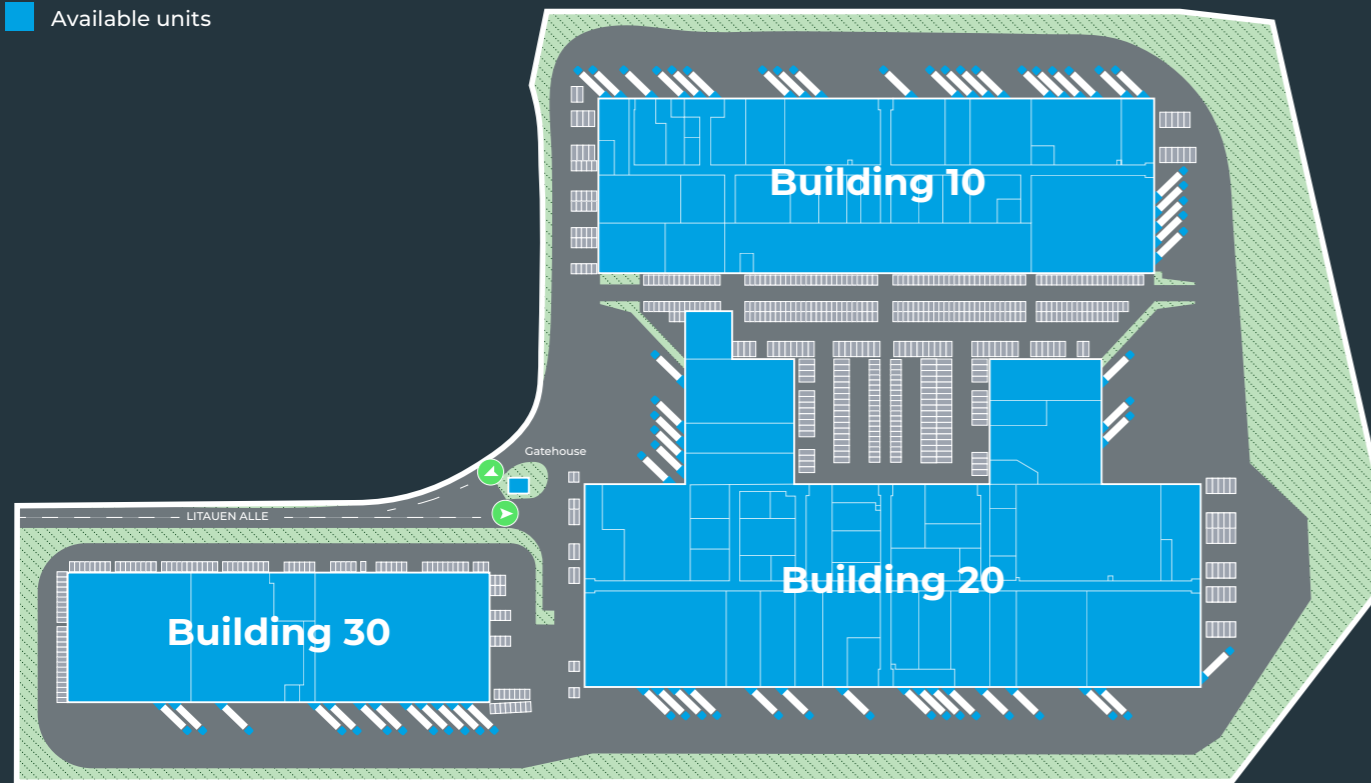


View video











# Copenhagen Markets

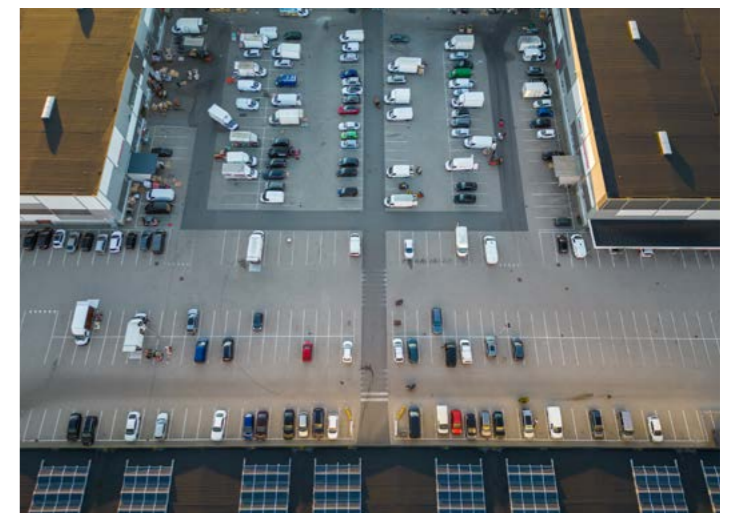
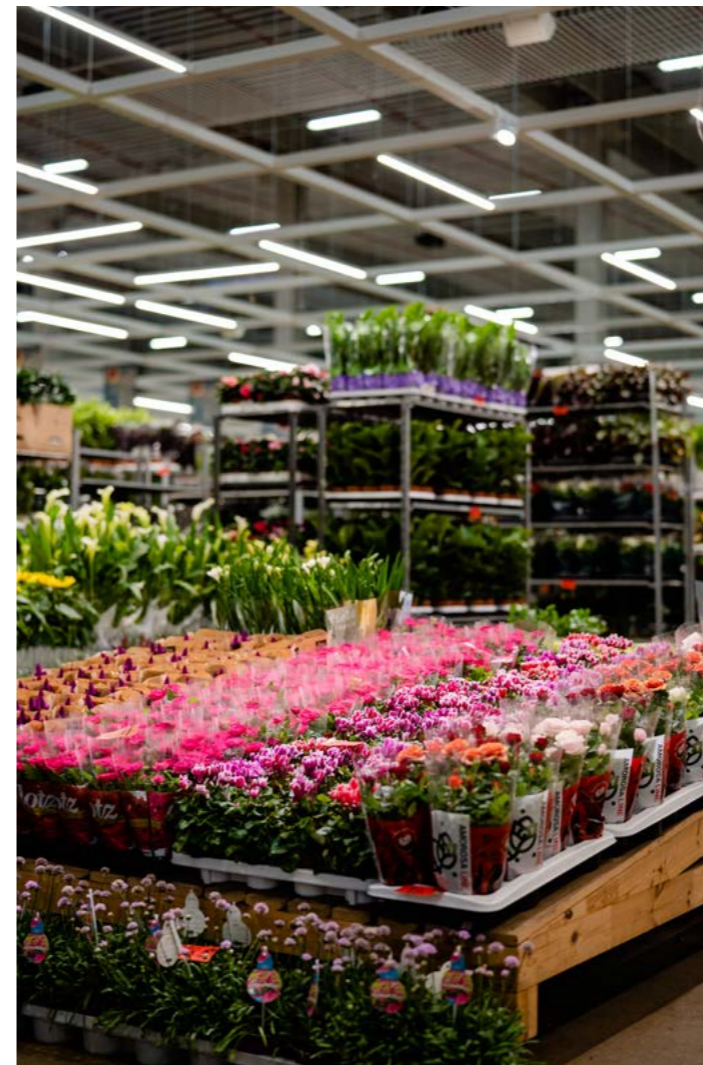
-  Main entrance
-  Available units

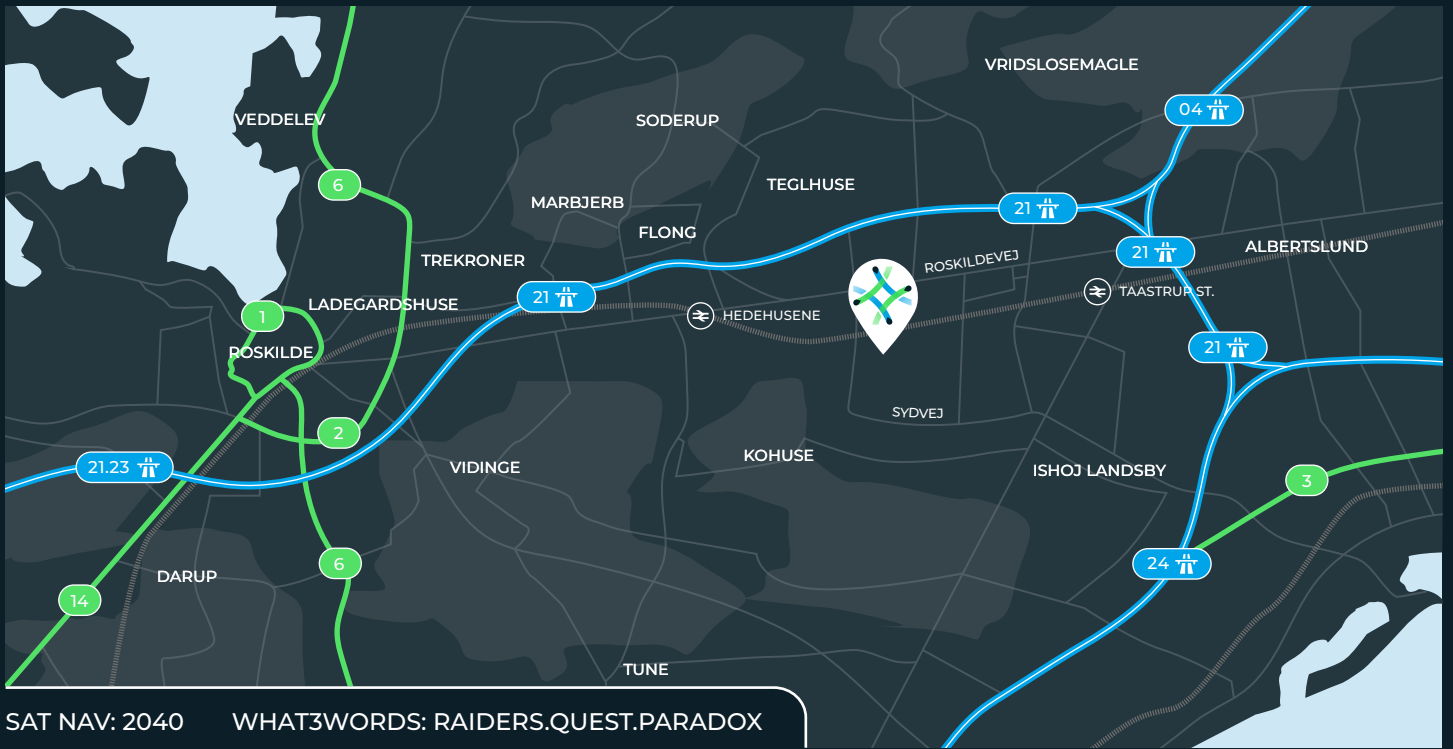


Available units: available units situated in building 10, 20 and 30. Contact for detailed information.

## Specification

-  Excellent accessibility
-  52 dock loading doors
-  15 ground level loading doors
-  10m eaves height
-  25 t/m2 minimum floor loading
-  Cold room options in some existing units
-  Extensive parking
-  On-site security






SAT NAV: 2040 WHAT3WORDS: RAIDERS.QUEST.PARADOX

# Strategic logistics location

Copenhagen Markets is located on a 220,000 m<sup>2</sup> site in the Høje Taastrup Transport Center. There are good access conditions from the Køge Bugt motorway, Holbæk motorway and Københavnsvej. It's about 29 kilometers to City Hall Square in Copenhagen and 60 kilometers to the city sign in Malmö.

From Høje Taastrup Station there is a good connection to public transport with S-trains, regional trains and bus lines.

|  | km | mins    |  | km | mins    |  | km | mins    |
|--|----|---------|---|----|---------|---|----|---------|
| Roskilde   | 16 | 17 mins | Roskilde  | 20 | 16 mins | Copenhagen Port   | 40 | 45 mins |
| Copenhagen   | 29 | 30 mins | Copenhagen  | 35 | 24 mins | Helsingborg   | 74 | 1 hr 31 |
| Malmö  | 60 | 55 mins |   |    |         |   |    |         |

Please contact us for further information:



**Jeanette Rosenberg**  
+4520 897 097  
jeanette.rosenberg@logicor.eu



**Martin Spangdahl-Fafara**  
+4540 501 512  
msf@croisette.dk

Grønttorvet Copenhagen Markets  
Litauen Alle 13, 2040, 2630 Taastrup, Denmark



LOGICOR.EU  
ukenquiries@logicor.eu